



BGSU<sup>®</sup>

**BGSU**<sup>®</sup>

APPLY ONLINE AT  
[www.bgsu.edu](http://www.bgsu.edu)

B O W L I N G   G R E E N   S T A T E   U N I V E R S I T Y



## Bowling Green State University – Your path to an exceptional education

### Celebrate learning

Discover a vibrant University that engages, challenges and prepares you for a meaningful future. Enjoy education that integrates personal growth, academic excellence and an environment that expands your thinking and potential.

### Choose a multi-dimensional campus

Opt for a campus with diverse activities, innovative academic programs and a dynamic mix of learning opportunities - on campus and beyond. It's an experience that transforms you, your life and your future.

### Discover academic excellence

BGSU offers nationally recognized programs and innovative academic models like our acclaimed residential learning communities. Student success results from the commitment of our outstanding faculty, the quality of our academics and the wide range of resources we provide.

### Graduate to limitless opportunity

U.S. News and World Report names BGSU as one of 24 universities nationwide, both public and private, recognized for graduating more students based on our student demographics.



### Bring the cover to life!

Download AURASMA Lite from your app store or Android market, subscribe to the BGSU channel then point your device at the cover and images throughout the brochure with the AURASMA Lite icon to access special content.

YOUR **journey**  
BEGINS HERE

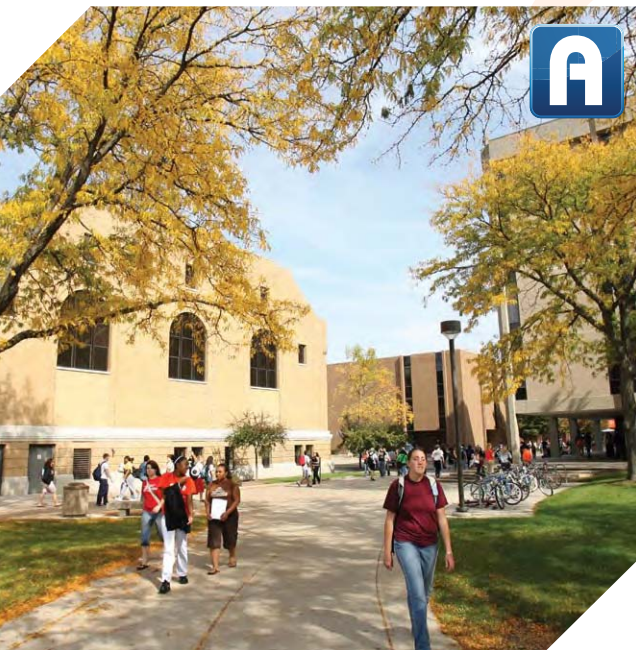


# IN SHORT:

# the best

## Contents

Vital Stats Worth Applauding	3
Nationally Acclaimed First Year Programs	4
Faculty and Curriculum Aim Higher	7
The World Is Your Classroom	8
From Promise to Achievement	11
Learning is a Collaborative Project	12
Get Involved	15
Campus Life Essentials	16
World Class, Real World Opportunity	19
Moving Up In The World	20
Areas of Study	22
Scholarships and Financial Aid	24
Experience Us For The Day	26
Apply Today!	29



### Degree programs and colleges

- » More than 200 undergraduate majors and programs.
- » BGSU operates on a semester system with three summer terms.
- » BGSU is ranked as a top institution by *U.S. News & World Report* and *Business Week* and is one of only six universities in Ohio to earn Tier One recognition.

### Colleges

- » Arts and Sciences
- » Business Administration
- » Education and Human Development
- » Graduate College
- » Health and Human Services
- » Musical Arts
- » Technology

### Regional campus

BGSU Firelands (Huron, Ohio)



## Vital Stats Worth Applauding

### Campus & location

- » Established in 1910, BGSU enjoys a physically compact, park-like campus. You can walk or bike anywhere in 10-15 minutes.
- » The city of Bowling Green (population 29,600, including students) was named one of the five best places to live in Ohio, by Ohio Magazine.

### Students and faculty

Approximately 20,000 students (3,000 are graduate students), including:

- » 18,000 on the main campus, and nearly 2,500 at BGSU Firelands in Huron, Ohio
- » 22 percent of the entering class are ethnic and racial minority students
- » 16 percent of students transfer from other colleges and universities
- » 7 percent of students are adult learners over the age of 25
- » Students from 50 states and 70 other countries
- » Entering freshmen have 22 average ACT and 3.25 average high school GPA
- » 20:1 student to faculty ratio

### Student life

- » Nearly 6,500 students in 15 residence halls and nearly 30 greek housing units
- » Nearly 325 student organizations, including more than 40 fraternities and sororities

### Financial aid opportunities

- » 90 percent of all entering freshmen receive financial aid
- » More than \$20 million in academic scholarships were offered to incoming students during the 2011-12 school year
- » 4,000 students earn \$8 million annually through on-campus employment



# Nationally Acclaimed First Year Programs

## A commitment to students

From the excitement of move-in day through all the fun and informative events planned for Fall Welcome, we want you to know we're glad you chose BGSU.

## On the right track

BGSU's first-year programs will help ease your transition to college life, provide valuable personal and academic skills and keep you up-to-date on what's happening throughout your entire first year. The First Year Success Series, a year-long series of workshops and activities, or BGSU 1000 as you will know it, all help you explore a host of resources on campus. Being engaged in your education makes your college experience more fun.

## Make yourself at home

Options at BGSU make it easy to develop connections within a smaller community while being active in the wider University community. You may choose to experience one of BGSU's award-winning residential learning communities where you can share in service, social and leadership experiences with close friends. With eight to choose from, you have plenty of options. And it's proven that students learn best when their academic and personal lives are linked. BG also offers a wide variety of on-campus resources for off-campus students including an on-the-go meal plan and commuter lounge, as well as opportunities for leadership development, community service projects and involvement in student organizations.

## Finding your way academically

BGSU offers a number of options for students who wish to explore various programs before choosing a major. You can begin your studies in Pre-Major Advising, where advisors are assigned to guide you through the process. Or you may enter a college as an "undecided" major with the goal of choosing an area of study in that college later.



**Leah Oliver**  
Alumni Laureate Scholar

### Friends



Jessie



Jeshayne



Hyebin

"The first time I visited campus it felt like home. The students are enthusiastic and ready to learn. The faculty and staff are eager to help and to build one-on-one relationships with students. BGSU gives students so many opportunities to succeed—both in and out of the classroom."



Nationally Recognized among the best by U.S. News & World Report for:

- » First-Year Programs
- » Residential Learning Communities

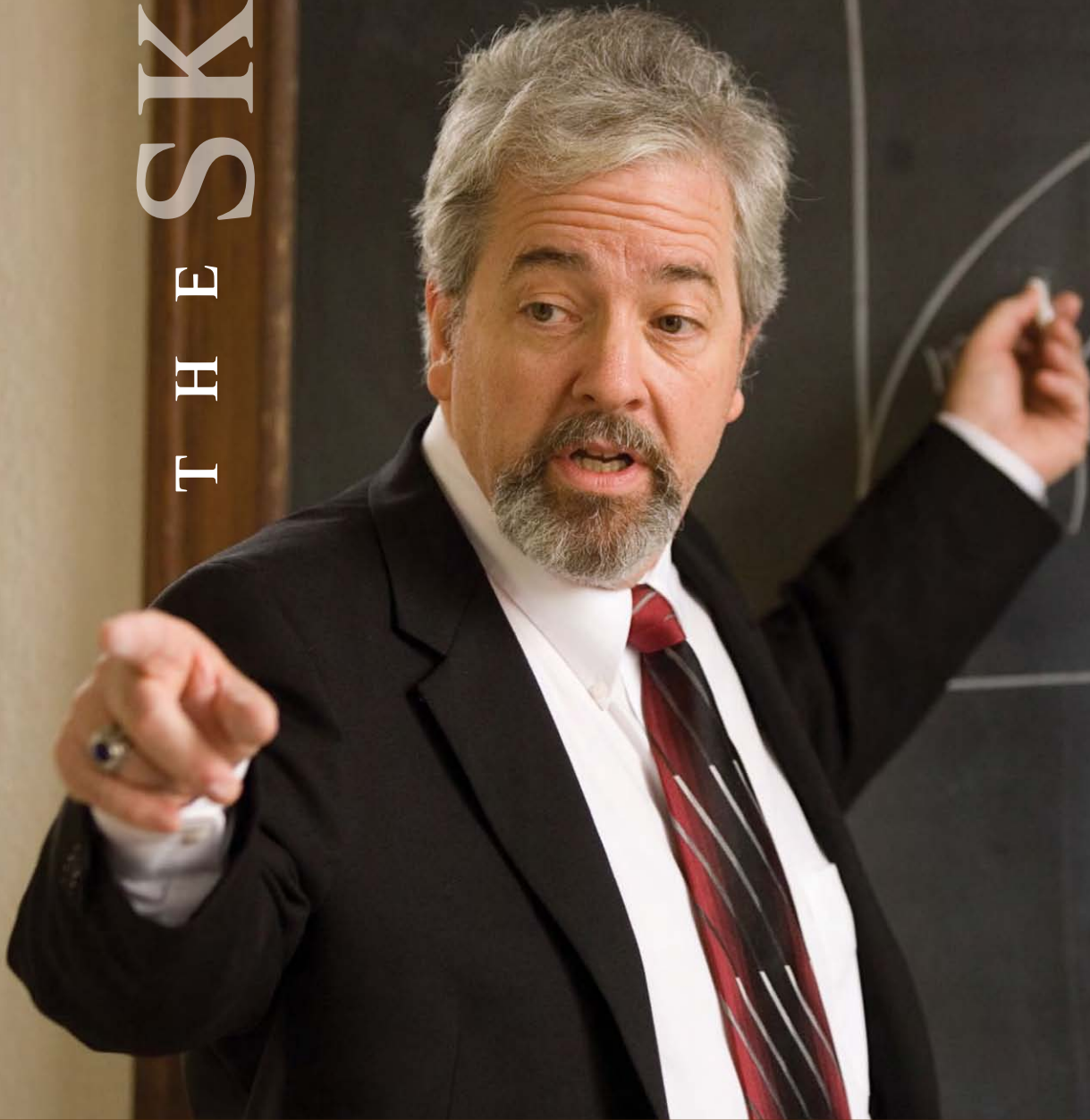


# helping students

GO THE DISTANCE

T H E S K Y ' S

t h e L I M I T



Dr. Kenneth Snead | Accounting & MIS | BGSU Master Teacher





## Faculty and Curriculum Aim Higher



**Brad Bernard**  
Aviation Studies

### Friends



Adeya



Davood



Erin

"Instructors are good about making sure each day offers something totally new for the students. The culmination of the experienced instructors, engaged students and advanced equipment has enabled me to finally make my piloting dreams a reality."

### Nationally respected, Personally vested faculty.

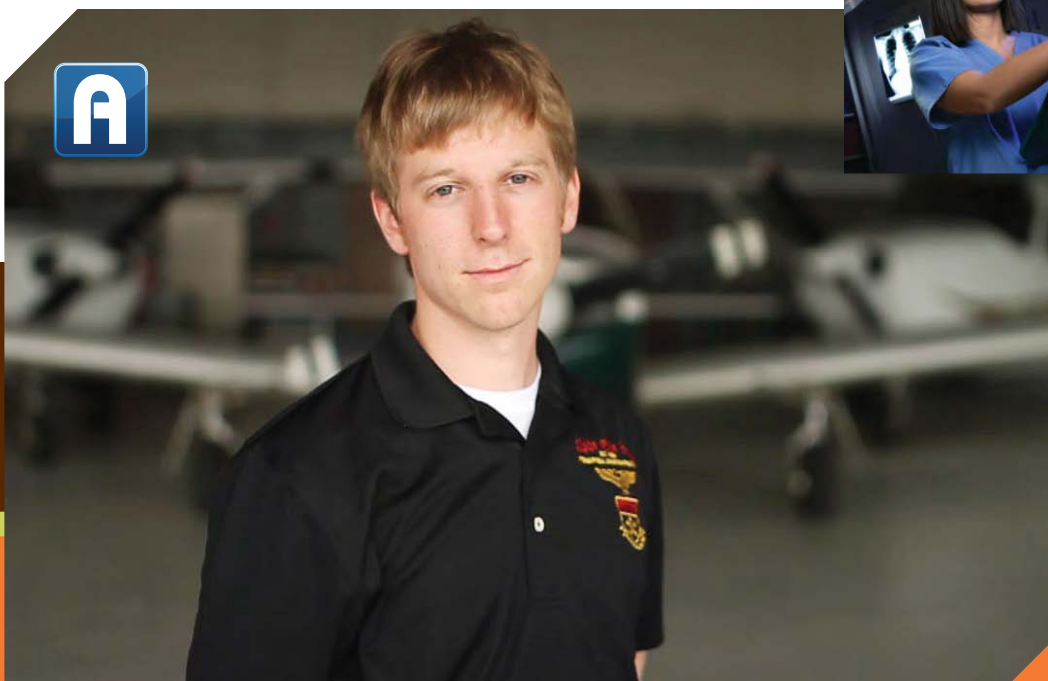
Over 80 percent of our 900 full-time faculty hold the highest degree in their field. BGSU faculty make teaching a priority, yet remain involved in research and other activities that enable them to bring life experiences as well as scholarship opportunities to their classrooms. They are dedicated to working in partnership with undergraduate students. At BGSU, senior faculty are committed to teaching introductory-level courses with reasonable class sizes.

### Challenge yourself

The academic possibilities that await you at BGSU are abundant. More than 200 undergraduate majors and programs in seven undergraduate colleges are available, plus master's and doctoral programs. At all levels, students are challenged to think critically and creatively. The University Honors Program offers distinguished faculty, small classes, intellectual challenges and involvement in scholarship and research. BGSU's dynamic, innovative academic environment asks you to open yourself to new ideas, learn in a larger, integrated context and continually grow and achieve.

### Discover innovative programs

At the heart of BGSU's degree programs is the goal of preparing graduates for careers that matter. You can choose from new programs that encourage you to pursue degrees in math, computer science and the natural sciences to pre-professional studies that prepare you to go into medicine and other health care careers. Or you can boost your marketability by combining your major with an entrepreneurship minor.





## The World Is Your Classroom

### Study abroad—pack your imagination

From studying art in Florence to student teaching in Rio de Janeiro, partnership programs with universities around the world allow you to study virtually anywhere. Pick from sponsored programs that include Australia, Austria, China, England, France, Germany, Japan, Mexico, Russia, Spain and the United Kingdom. For details: <http://educationabroad.bgsu.edu>.

### On the road

Enroll in GeoJourney, a 9-week camping trip across the United States that earns you academic credit and fulfills degree program requirements. Consider volunteering during your break to help victims of natural disasters, or participate in learning communities and classes that count travel as an important component of learning. Whether for credit or personal experience, BGSU offers you options to grow beyond the classroom.

### Learning to serve. Serving to learn.

Leadership lessons are also learned outside of the classroom. BGSU students involved in organizations, service projects and as peer educators gain a sense of self as well as a sense of others. These activities help reinforce the classroom lessons in leadership and link to the University's commitment to civic responsibility and service to the community.



**H. Cory Tuttle**  
Supply Chain Management

### Friends



Jasmine



Tim



Nicole

### Charting the future

My dual degree study abroad program has allowed me to travel to Shanghai, China, over a summer to work for Goodyear Tire Management Co. Ltd., gaining valuable insight into the operation of the business and applying my academic knowledge to real-world projects.

### Seizing opportunities

I have tried my hardest to get the most out of my four years here at BGSU. The great thing about BG is that there are so many different ways to better yourself as an individual, all while having fun in the process.



# experience

IS A LIFE-CHANGING LESSON



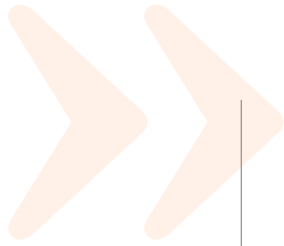
BGSU faculty and students embark on an excursion to the American Southwest.



# IDEAS

that change the world

Skyler Rogers '12 is making the world a nicer place one t-shirt at a time.



## From Promise to Achievement



**Kaitlin Mielnicki**  
Honors Student

### Friends



Shane



Shivani



William

"Being a member of the Honors Program is so much more than just taking Honors courses. As an Honors student I was able to get more out of my classes through the close interaction with my professors and peers. I was able to engage in rich discussions that make you realize that you are a part of something bigger than yourself. One of the best parts of BGSU is its deep sense of community. I found a community of scholars within the Honors Program."

### Meaningful lessons. Meaningful lives.

At BGSU you'll discover a learning environment designed to inspire today's high achieving students to become tomorrow's leaders. You'll learn to think critically, think globally and focus on the relationships between ideas. And through personal relationships, community outreach, political activism and academic advancement, you'll have the chance to interact with others - developing an understanding of what it takes to participate, influence and lead.

### Learn to Lead.

If you are serious about developing your leadership qualities and aspire to be a leader throughout college and after graduation, BGSU has many programs that tap into your leadership potential. The Sidney A. Ribeau President's Leadership Academy (PLA) or the Alumni Laureate Scholars Program - each with a specific focus - help you connect, synthesize, communicate and lead with integrity, wherever your dreams take you.

### Flourish in a community of scholars.

BGSU Honors students engage in independent research and scholarly inquiry through the Honors Project. For two semesters, you will work one-on-one with faculty members to expand your knowledge base in your field of interest.

One excellent resource to assist you in the Honors Project is the Center for Undergraduate Research and Scholarship (CURS), which is located within the University Honors Program office and is there to assist you with research through grant funding and by connecting you with faculty for various research and scholarship projects.

Skyler Rogers, a Marketing and Entrepreneurship major and Honors student, was awarded the BGSU Stuart R. Givens Memorial Fellowship. Skyler used the funding to travel through India and Kenya. Due to this life-changing experience, he started a business to support nonprofit organizations and social causes in need. During the 2012 Sebo Series in Entrepreneurship, Skyler's company [niceshirt.org](http://niceshirt.org) was awarded \$20,000 in the Ron Whitehouse Business Plan Competition.

For details and resources visit: [bgsu.edu/honors](http://bgsu.edu/honors).





## Learning is a Collaborative Project



BGSU is known for “innovation, collaboration and sustainability” in the use of technology to support and improve education.

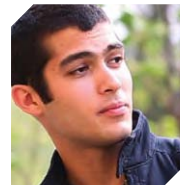
### At BGSU learning extends beyond the classroom

BGSU’s Learning Commons brings academic services and library resources into one space for students who might need or want help with math and statistics, study skills, writing or tutoring in any subject. The new location allows you to access the library’s extensive print and electronic collections, use state-of-the-art technology for research and coursework, and meet faculty and students in comfortable spaces in the heart of the academic community.

### Learning accelerated by newest technologies

The University is an international leader in the field of digital media. BGSU has been selected to house a Media Research Center and develop facilities for the study of digital media, including digital video, computer animation, digital imaging, virtual reality and interactive multimedia.

The Center for Online and Blended Learning provides increased opportunities for students to achieve their educational goals through the growth of online courses and blended programs.



**Davood Dadfer**  
Biology

#### Friends



Alan



Brad



Courtney

“There isn’t much more I could ask for here, great instructors, state of the art facilities and amazing opportunities to research, learn and grow. One of the things I love about BGSU is its diversity. No matter what stage of life you are at or where you came from it offers something for you.”



# LEARNING

AT THE SPEED OF TECHNOLOGY



Sundeep Mutgi | President Student Government



SPREAD YOUR WINGS.



fly falcon

Jorden Crawford | Sports Management





**Ashleigh Gomez**  
BG Undead Human

**Friends**



Ashley



Sarah



Laura

"I've met so many great friends, had exceptional trainers and enjoyed all the available tools and resources BGSU has to offer. BGSU is an environment full of life and excitement. It's a university that allows me to express myself."

## Get Involved

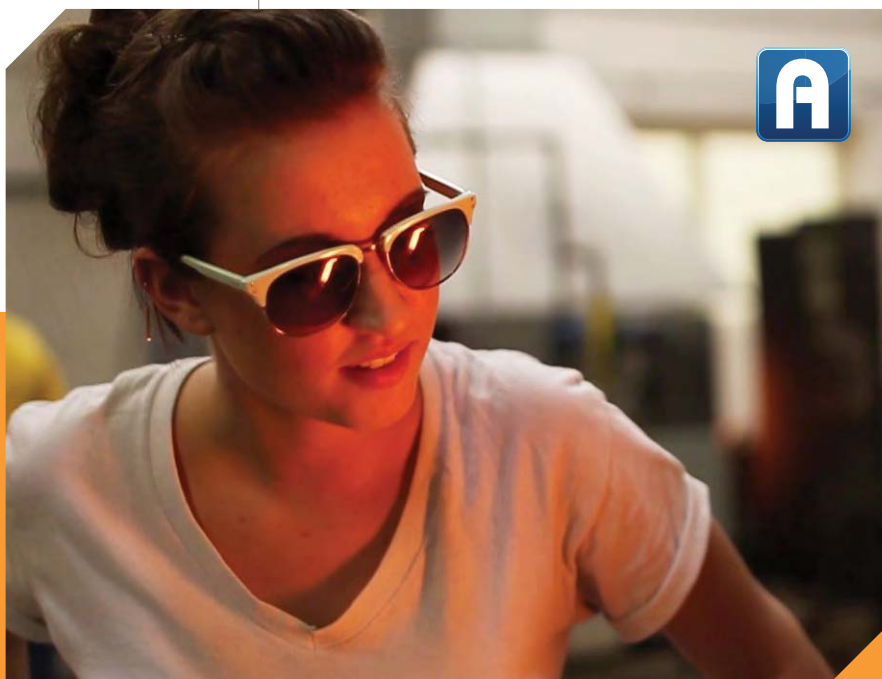
History and traditions are part of the culture of every university, but be aware when you enter Bowling Green State University you become a Falcon in the land of orange and brown. It's up to you to decide what kind of Falcon you want to be.

### Go Falcons!

Put on your orange and brown gear and cheer on your favorite Falcon athletic team. There are 18 NCAA Division I intercollegiate athletic teams to choose from on campus. Or, be a participant rather than a spectator when you sign up for any of the 20 intramural sports ranging from the traditional basketball and softball to the offbeat Ultimate Frisbee and innertube water polo. Try your hand at whitewater rafting, rappelling and rock climbing when you participate in Outdoor Programs.

### Jump in. Join up.

If you are looking for involvement, you can join with others who have your interests. All BGSU students with a passion for music may participate in orchestras, bands, choirs, ensembles and opera productions. We have over 325 student organizations so there is something for everyone. As a member of the University Activities Organization, you can help plan campus activities. You can make a difference as a member of BGSU's Dance Marathon. You can share an organization's spirit and message when you paint the campus Spirit Rock.





## Campus Life Essentials

### Living on campus

There's a whole new look and feel on campus with the addition of two new residence halls. Centennial Hall for freshmen features air-conditioned, double rooms with private bathrooms and plenty of amenities and Falcon Heights, the same, except for upperclassmen.

Residence life is a big part of your education at BGSU—so big that freshmen and sophomores are required to live in University housing unless they commute from home.

Think of your residence hall as a small community, the center of your new campus social life, even an opportunity to develop your leadership skills. When you live on campus, you're just minutes away from your classes, dining centers, libraries, Student Recreation Center and downtown. You may choose both your roommate and residential area on a space-available basis.

### Commuting to BG

If you're commuting, you can take advantage of the on-campus resources for off-campus students. Check out the commuter center lounge and study area at the Bowen-Thompson Student Union where you'll also find a computer lab, the BGSU bookstore, ATMs and lots of dining options. Convenient highway access to the campus along with commuter parking areas and reliable shuttle service makes getting in and around BGSU easy.

### Dining choices

The Oaks and Carillon Place are the two new, state-of-the-art dining halls, both designed with the environment in mind. They offer such options as My Pantry, a self-service station to make your own meals, and an attached food retail store. Sweet additions are *Dunkin' Donuts* in The Oaks and *Pinkberry* frozen yogurt store in Carillon Place.

No matter what you're hungry for, you can find it at one of our on-campus dining areas. Eat in or carry out at traditional dining centers, snack bars, delis, food courts and restaurants in the residence halls and the Bowen-Thompson Student Union. Chartwells, our dining services provider, offers you award-winning "Pulse on Dining" menus to create great food and a wonderful dining experience. You also can stock your fridge or snack cupboard at one of our convenience stores. Each year you purchase a meal plan to fit your lifestyle; food purchases are deducted automatically from your prepaid account.

### Keeping you safe and secure

BGSU is located in Bowling Green, a classic college town set in the quiet farm fields of northwest Ohio. Our Department of Public Safety provides around-the-clock police protection and sponsors many crime prevention programs.

- » AlertBG text message alert system
- » Campus Escort Service
- » University Shuttle
- » Campus-wide outdoor lighting system
- » 911 telephone system and outdoor emergency telephones
- » Electronic door access security systems and 24/7 staffing in all residence halls



Centennial Hall



Carillon Place Dining Hall

# new places

## NEW SPACES



Oaks Dining Hall



Eileen O'Neill '90 president and general manager of The Learning Channel (TLC) describes herself as "homegrown talent," having started at Discovery Communications as an intern while earning a graduate degree in popular culture from Bowling Green State University.



planet  
green 

LIVE

WHAT YOU LEARN



Nicole  
Student Blogger

Friends



Samantha



Carla



Elizabeth

Best advice.

"I highly advise developing a mentoring relationship with a faculty member in whatever department you choose to study. As professionals in the field, they know a great deal about different career paths and will help with applications and reference letters for whatever you choose to do after college."

-Elizabeth, Class of 2012

"College is about figuring out what works for you and then pursuing it wholeheartedly. Learn from your experience, and try something different. If you're nervous and really hesitant that's a good sign something positive could come from that experience. Go ahead try it!"

-Samantha, Class of 2014

"Make these next few years whatever you want them to be, be who you have always wanted to be. Find your passion here and give it your all. I can promise you, you won't regret it!"

-Nicole, Class of 2013

Best advice courtesy of the Pieces of BGSU found at <http://blogs.bgsu.edu>.

## World Class, Real World Opportunity



Sometimes the best education is outside the classroom. When you put yourself into a real-life learning environment, you learn with your head, your hands, your heart. The learning becomes more real.

### Real-life lessons learned

Cooperative education and internships take your learning to the real-world classroom. In co-ops, you earn an income while gaining valuable and practical experience in your related academic field. Internships help you gain professional-level work experience in businesses and organizations related to your studies. BGSU has high-level, well-known companies and organizations that recruit BGSU interns and co-op students, including Abercrombie & Fitch Co., David Letterman, Ernst & Young LLP, Habitat for Humanity, Mayo Clinic, People Magazine, The Olympics, U.S. Departments of State, Defense and Labor and Walt Disney Company. You can participate in one, two or three semesters of co-op in a full-time or part-time work experience. For details: <http://hire.bgsu.edu>.

### Adventure beyond textbooks

Parachutes. Rappelling. Personal integrity. Survival skills. Leadership development. That's what education means to ROTC students. Your college experience will be more intense in the Air Force or Army ROTC. Scholarships and a monthly stipend are among the attractive options if you choose ROTC.

BGSU was ranked 24th in the nation in the 2011 Best for Vets: Colleges in Military Times EDGE and recognized for the second year in a row by G.I. Jobs as a Military Friendly School.





James Pickens Jr. '76, actor and star of ABC's "Grey's Anatomy"

## Moving Up In The World

### Start with a goal

From your first days as a BGSU student to finding your first job, the BGSU Career Center will help you develop your career goals and work toward finding the ideal job. You can participate in individual career counseling, career and life-planning classes (for academic credit), interest inventories and assessment exercises. Our innovative career development and employment services have earned two prestigious Awards of Excellence from the National Association of Colleges and Employers.

### Get connected

BGSU WorkNet, an interview sign-up, resume referral and job vacancy service, connects you to employment opportunities around the globe. The Career Center Website (<http://hire.bgsu.edu>) includes online access to the Career Center staff, links to numerous career resources on the Internet and the ability to schedule appointments with recruiters.

### Some of BGSU's successful grads

**Daniel Ayalon '83** | former Israel Ambassador to the U.S.

**Dan Bylsma '92** | NHL coach for 2009 Stanley Cup champions Pittsburgh Penguins

**Beth Johnson-Christoff '96** | 2008 Distinguished Principal, National Association of Elementary School Principals

**Anthony Doerr '99** | *New York Times* award-winning author

**Steve Demos '70** | founder and former president of WhiteWave Inc. (Silk brand)

**Otara Chandiram Gunewardane '85** | founder and CEO of Odel, leading fashion and retail stores in Sri Lanka and Asia

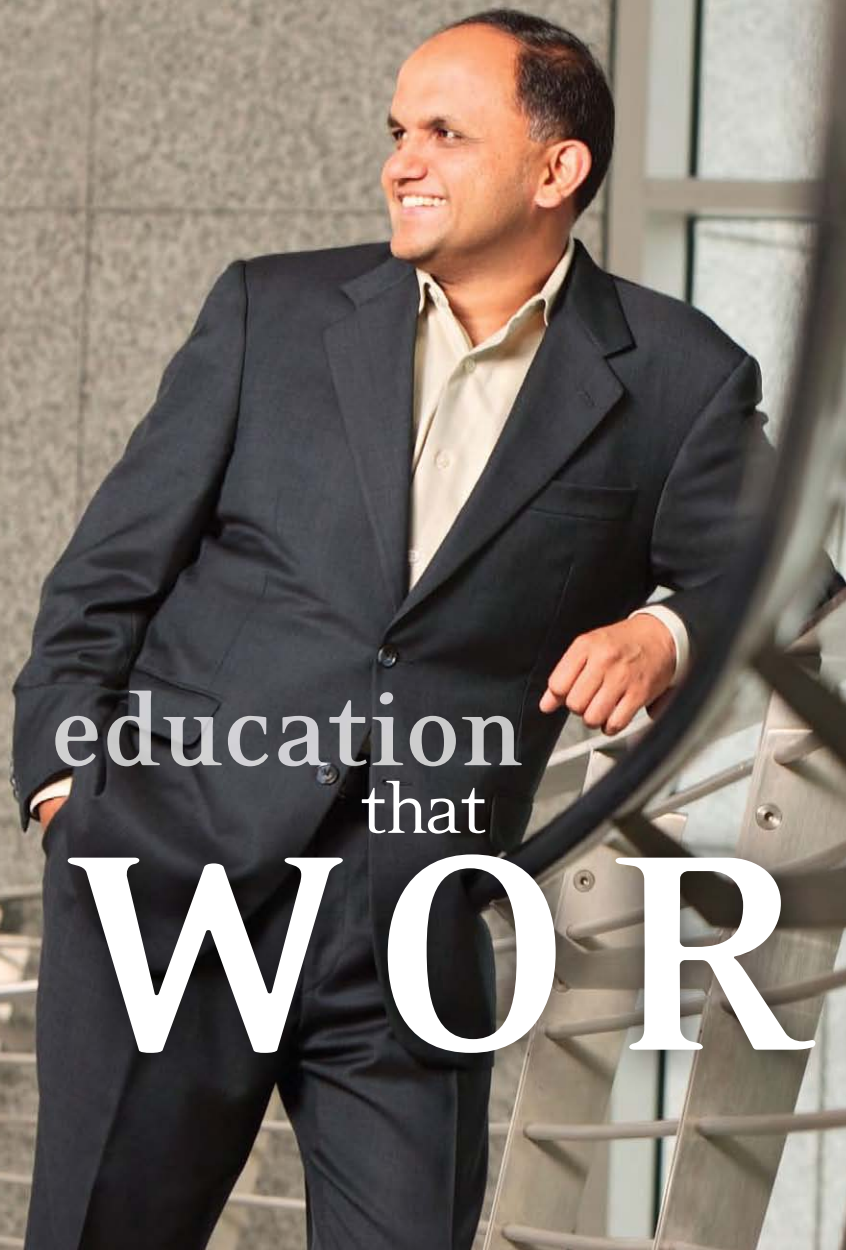
**Ginger Kathrens '68** | Emmy Award-winning producer and director

**Benjamin J. Marrison '85** | editor, *The Columbus (Ohio) Dispatch*

**Jeff Shore '75** | E!Network, former Senior VP of production; executive producer/creator of E! True Hollywood Story



Alissa Czisny '09, women's national figure skating champion 2009



education  
that

**WORKS**

Shantanu Narayen '86, '11, President and CEO of Adobe Systems Inc.

# AREAS of STUDY

Accounting\*\*\*  
 Africana Studies  
 American Culture Studies  
 Apparel Merchandising and Product Development  
 Applied Economics\*\*\*  
 Applied Health Sciences  
     Allied Health  
     Applied Microbiology  
     Community Health  
     Health Care Administration  
     Health Science  
 Architecture & Environmental Design\*  
 Art\*  
 Art Education  
     2D Studies Specialization\*<sup>2</sup>  
     3D Studies Specialization\*<sup>2</sup>  
 Art History  
 Digital Arts<sup>2</sup>  
     (Computer Animation, Imaging, Interactive Multimedia)  
 Graphic Design\*<sup>2</sup>  
 Three-Dimensional Studies\*<sup>2</sup>  
     (Ceramics, Glass, Jewelry/Metals, Sculpture)  
 Two-Dimensional Studies\*<sup>2</sup>  
     (Drawing, Painting, Photography, Printmaking)  
 Asian Studies  
 Athletic Training\*  
 Aviation Studies\*  
     Aviation Management and Operations\*  
     Aviation Engineering Technology\*  
     Flight Technology and Operations\*  
 Biology  
     Ecology and Conservation Biology  
     Marine and Aquatic Biology  
 Business Analytics and Intelligence\*\*\*  
 Chemistry  
     Biochemistry  
 Classical Civilization  
 Communication\*  
 Communication Sciences and Disorders\*  
 Computer Science  
     Business Systems  
     Geographic Information Systems  
 Construction Management\*  
 Creative Writing  
 Criminal Justice  
 Dance\*

Dietetics  
 Economics\*\*\*  
 Electromechanical Systems Technology\*  
 Electronics and Computer Technology\*  
 Engineering Technology\*  
 English  
 Environmental Health\*  
 Environmental Policy and Analysis  
 Environmental Science  
 Ethnic Studies  
 Exercise Science\*  
 Film  
     Film Production  
     Film Studies  
 Finance\*\*\*  
 French  
 General Business/Individualized Business\*\*\*  
 Geography  
 Geology  
     Paleobiology  
 German  
 Gerontology  
     Long-Term Care Administration  
 History  
 Human Development and Family Studies  
 Individualized Planned Program  
 Information Systems Auditing and Control\*\*\*  
 Interior Design  
 International Business\*\*\*  
 International Studies  
 Journalism\*  
 (All include online media)  
     Broadcast Journalism  
     Print Journalism  
     Public Relations  
 Latin  
 Liberal Studies\*  
 Management\*\*\*  
 Management Information Systems\*\*\*  
 Marketing\*\*\*  
 Mathematics  
     Actuarial Science  
     Applied Mathematics  
 Medical Laboratory Science  
 Microbiology  
 Music  
     Jazz Studies<sup>1</sup>  
     Music Composition\*<sup>1</sup>  
     Music Education\*<sup>1</sup>  
     Music History and Literature\*<sup>1</sup>  
     Music Performance\*<sup>1</sup>



Brass/Percussion, Woodwinds, Strings, Piano, Organ, Harpsichord, Voice, Guitar—Jazz and Classical Emphasis, Church Music, Woodwind Specialist  
 World Music\*<sup>1</sup>  
 Bachelor of Musical Arts  
 Neuroscience  
 Nutrition Sciences  
 Philosophy  
 Physics  
 Political Science  
 Popular Culture  
 Pre-Nursing\*  
 Pre-Physical Therapy\*\*  
 Pre-Professional Programs\*\*  
     Pre-Dentistry  
     Pre-Engineering  
     Pre-Law  
     Pre-Medicine  
     Pre-Mortuary Science  
     Pre-Occupational Therapy  
     Pre-Optometry  
     Pre-Osteopathy  
     Pre-Pharmacy  
     Pre-Veterinary Medicine  
 Psychology  
 Russian  
 Scientific and Technical Communication  
 Social Work\*  
 Sociology  
 Spanish  
     Latin American Culture Studies  
 Sport Management  
 Statistics  
 Supply Chain Management\*\*\*





Teacher Preparation  
 Art Education  
 Business Education  
 Early Childhood Education\*  
 (Pre-K through 3rd)  
 Intervention Specialist\*  
 (Deaf/Hard of Hearing;  
 Mild-Moderate; Moderate-Intensive)  
 Marketing Education  
 Middle Childhood Education\*  
 (4th through 9th)  
 Music Education\*<sup>1</sup>  
 Physical Education and Teacher  
 Education\*  
 Secondary Education  
 (7th through 12th)  
 Integrated Language Arts  
 Integrated Mathematics  
 Integrated Sciences  
 Integrated Social Studies  
 Sciences: Single Field  
 (Life Sciences, Earth Sciences,  
 Physical Sciences-Chemistry,  
 Physical Sciences-Physics)  
 Sciences: Dual Fields  
 (Earth Sciences and Chemistry;  
 Earth Sciences and Physics;  
 Life Sciences and Chemistry;  
 Life Sciences and Earth Sciences;  
 Life Sciences and Physics; Physical  
 Science-Chemistry and Physics)  
 World Language Education  
 French  
 German  
 Latin  
 Russian  
 Spanish

Telecommunications  
 Interactive Media  
 Media Business  
 Radio  
 Television/Video

Theatre  
 Acting/Directing  
 Design/Technical Theatre  
 Musical Theatre<sup>1</sup>  
 Performance Studies  
 Youth Theater/Puppetry

Tourism, Leisure and Event Planning  
 Visual Communication Technology \*  
 Women's, Gender and  
 Sexuality Studies  
 Undecided

## BGSU Firelands, Huron, Ohio

### Baccalaureate Degrees

Bachelor of Liberal Studies\*  
 Bachelor of Science in:  
 Applied Health Science,  
 Allied Health Track  
 Applied Health Science, Respiratory  
 Care Specialization  
 Business Administration,  
 General Business/  
 Individualized Business\*  
 Criminal Justice\*  
 Education, Early Childhood  
 Education\*  
 Nursing, (RN/BSN Completion  
 Program in consortium with  
 the University of Toledo Health  
 Science Campus)\*  
 Social Work\*  
 Technology, Visual Communication  
 Technology\*

### Associate Degrees

#### Transfer Programs

Associate of Arts—1st two years of a  
 Bachelor's degree (online option)  
 Associate of Science—1st two years of  
 a Bachelor's degree

#### Career and Technical Majors

Associate of Applied Business in:  
 Business Management Technology,  
 with majors in:  
 Accounting  
 General Business Management  
 Lean Systems Management  
 Computer Science Technology,  
 with majors in:  
 Computer Networking  
 Specialist  
 Computer Support Specialist  
 Visual Media Technology, with  
 majors in:  
 Interactive Media  
 Print Media

#### Associate of Applied Science in:

Criminal Justice  
 Diagnostic Medical Sonography\*\*\*  
 Early Childhood Education  
 Electrical/Electronic Engineering  
 Technology with majors in:  
 Electromechanical Technology  
 Electronics and Computer  
 Technology

Health Information Technology\*  
 Human Services  
 Industrial Technology with  
 major in:  
 Manufacturing  
 Radiologic Technology\*\*\*  
 Respiratory Care Technology\*\*\*  
 Associate of Technical Study  
 Associate of Technical Study in  
 Coding and Medical Billing  
 Associate of Technical Study in  
 Radiologic Science

### Certificate Programs

Administrative Office Systems—  
 area of concentration  
 Business Application Specialist  
 Business Management Technology—  
 areas of concentration  
 Bookkeeping  
 Management and Supervision  
 Small Business Management

### Undecided

\* Programs marked with one asterisk require students to pass a set of coursework, usually within the first two years of study, before they are officially admitted to the major.

\*\* Programs marked with two asterisks are not academic majors. They are pre-professional programs which help to prepare students for professional schools, such as law or medicine. These pre-professional programs require a disciplinary or interdisciplinary major.

\*\*\* These programs are selective admissions. After students are admitted to pre-programs based on admissions requirements, they go through an additional review and/or application process before they are officially admitted to the major.

# This is a student-developed combination of courses in a specific area of concentration not available in other degree programs. Applicant's plan of study must be approved prior to admissions to the major.

<sup>1</sup> Entrance audition required.

<sup>2</sup> Portfolio review required.



# Scholarships and Financial Aid



## Great work = Great rewards

Automatic and Renewable Scholarships are available for incoming freshmen.

Check out your eligibility instantly with BGSU's Scholarship Calculator at: <http://choose.bgsu.edu/aid/scholarships>. All scholarship program information is subject to change.

## Scholarships include

### University Freshman Academic Scholarships

Students are considered for merit-based scholarships based on a combination of grade point average and

standardized test score (ACT or SAT). Award levels of \$1,000, \$4,000, \$6,000 and \$8,000 are available.

### High Distinction Scholarship Competition

Compete for this renewable full-fee scholarship through the Honors Program. To be considered, you first must have a minimum 3.8 high school cumulative GPA, a minimum 30 ACT or 1300 SAT score (critical reading plus math), and submit a completed application for admission to BGSU and a completed application for the Honors Program by Dec. 1, 2012. Selected applicants will interview on campus in January 2013. If renewal criteria are met, this scholarship is renewable for three continuous academic years or six semesters. Information is available at [www.bgsu.edu/offices/honors](http://www.bgsu.edu/offices/honors).

### BG Success Scholarship

Half off the nonresident fee to qualified full-time non-Ohio residents if you have 3.0 cumulative GPA OR 20 or higher ACT composite OR 920 or higher SAT (critical reading plus math). Current value \$3,654.

### University Tuition Scholarship for Underrepresented Students

Awards from \$1,000 up to full tuition are available if you demonstrate financial need (based on the FAFSA), and if you meet additional eligibility: academic achievement, including minimum 3.0 cumulative GPA, minimum 20 ACT or 920 SAT scores; race/ethnicity; high school and residence location, and commitment to diversity. An additional application and essay are required.

BGSU awards thousands of scholarships annually, and many additional scholarships are available.

Student Financial Aid offers comprehensive assistance for financing your college education:

- » BGSU Searchable Scholarship Guide
- » Financial Aid Estimator
- » Online tutorial for completing Free Application for Federal Student Aid (FAFSA)

All available at [www.bgsu.edu/offices/sfa](http://www.bgsu.edu/offices/sfa)

Knowledgeable Student Financial Aid staff are also available in person and on the phone to answer any questions you might have about scholarships and financial aid at BGSU.

## Student employment

Get a jump on the career exploration process and earn money with part-time employment as a student. BGSU employs 4,500 students each year in jobs that can be challenging, educational and fun. Many are related to students' academic majors and provide a career path with successive levels of promotion and responsibility. Student Employment Services posts on- and off-campus part-time, summer job and internship vacancies online at the BGSU Student Employment Services Web site at: [www.bgsu.edu/stuemp](http://www.bgsu.edu/stuemp)



## BGSU 2012-13 Annual Cost Summary (Fall and Spring Semesters)

Tuition and fees	\$10,393
Room*	\$5,040
Bronze meal plan**	\$3,024
Total for Ohio resident	\$18,457
Nonresident fee***	\$7,308
Total for out-of-state student	\$25,765

\* Standard occupancy rooms in the halls where most freshmen live.

Charges are higher for Centennial, Conklin, Offenbauer Towers, special interest housing, houses and single rooms.

\*\* This plan allows for an expenditure of \$13.38 per day for 113 days of each semester. Other plans are priced at annual rates of \$3,598 and \$3,906.

\*\*\* BG Success Scholarship for non-Ohio residents covers 50% of nonresident fees.

*Fees are subject to change at any time with Board of Trustees' approval.*

### Estimate of Other Expenses

Books and supplies	\$1,194
Miscellaneous expenses (Entertainment, transportation, laundry, etc.)	\$3,182
Other fees	\$144

Tuition and fees estimator  
[www.bgsu.edu/estimator](http://www.bgsu.edu/estimator)



**INVEST** in your  
future

Jeannie Sabaroff | College Student Personnel



# Experience Us For The Day

As you make your decision about college, there is no substitute for a campus visit. BGSU's Office of Admissions offers several ways for you to learn about the University and its many programs. To make your visit as personal as possible, we ask that you schedule in advance at: [choose.bgsu.edu/visit](http://choose.bgsu.edu/visit).

## Visit options

### Group information sessions

A multimedia presentation in the Office of Admissions.  
Monday-Friday, 10 a.m. and 1 p.m.  
Select Saturdays during the academic year, 10 a.m. only.

### Student-guided tours

Monday-Friday, 11 a.m. and 2 p.m.  
Select Saturdays during the academic year, 11 a.m. only  
A 75-minute student led walking tour with stops in academic buildings and a typical residence hall room.



### Class visits

Weekdays during fall and spring semesters you can **sit in on a college class**. For a list of available classes, visit <http://choose.bgsu.edu/visit/class>.

### Financial aid information

Counselors in Student Financial Aid, 231 Administration Bldg., are available from 8 a.m. to 5 p.m. Monday through Friday.

### Visit dates

The best time to visit is when classes are in session.  
Note: In 2012-13, a fall break is scheduled Oct. 4-7, 2012

and students leave for fall semester break on Dec. 14, 2012 and return on Jan. 6, 2013. Spring recess is March 4-8, 2013, and the spring semester ends May 3, 2013. See inside back cover for a listing of dates when the Office of Admissions is closed and for directions and accommodations.

BGSU Firelands welcomes visitors too. Call 419-433-5560 or 1-800-322-4787.

## Special visit programs (Main Campus)

### Preview Days (Fall Open Houses)

Oct. 20 and Dec. 1, 2012, 9 a.m. to noon  
Information session for multicultural students in conjunction with Preview Days.

### Presidents' Day Open House

Feb. 18, 2013, 9 a.m. to 4 p.m.  
Contact the Office of Admissions for further information.  
Information session for multicultural students in conjunction with Presidents' Day.

### Spring Preview Day 2013

April 20, 2013, 9 a.m. to noon  
Juniors and sophomores are invited to start their college search.

### Falcon Fridays

March 22, 29; April 5, 12, 19, 26, 2013  
10 a.m. to 1 p.m.

Learn more about dates and events leading to enrollment and finalize plans for fall.

### College of Musical Arts Audition Days

Nov. 30, 2012; Jan. 12, Feb. 2, Feb. 22 (limited to vocalists), Feb. 23 (scholarship audition deadline), April 20, 2013.

### Music Discovery Day

Oct. 22, 2012

### Junior Trial Audition Day

April 20, 2013

### Musical Theatre Audition Days

Nov. 30, 2012; Feb. 2, April 20, 2013.





# AN INVITATION

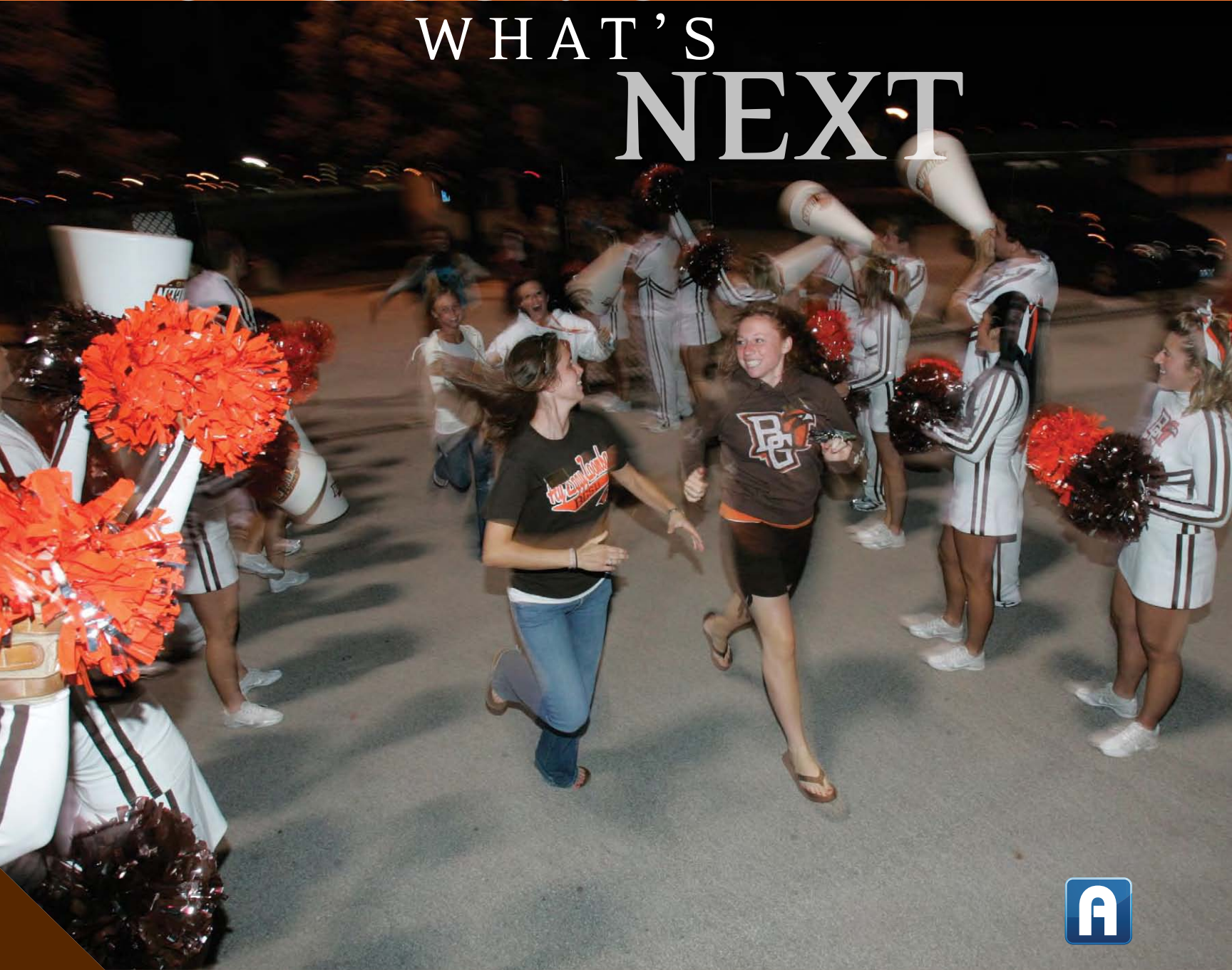
to visit



discover

WHAT'S

NEXT



APPLY ONLINE

# Apply Online!

It's easy to apply to BGSU. Simply go to <http://choose.bgsu.edu/apply/online>. The sooner you apply, the sooner you'll be able to start planning for a great future at BGSU.

## Freshman admission standards

For admission to Bowling Green State University a freshman applicant must:

1. Be a graduate of a senior high school approved or accredited by the department of education of the state in which it is located; or
2. Have earned high school equivalency through the General Educational Development (GED) testing program (issued by the state department of education); or
3. Present GED test results and ACT or SAT test results, if the student completed secondary education through an alternative program such as home schooling; or
4. Present an international baccalaureate diploma or certificate.

Admission is selective. In general, we require a high school record that includes four units of English; three units each of mathematics, science and social studies; two units of a foreign language; and one unit of visual or performing arts. Freshman applicants who do not meet the academic standards for admission may be offered admission to the University Program for Academic Success. Admission to the University Program for Academic Success is also selective, but not as competitive as regular admission. Space is limited.

An applicant is considered for admission on the basis of four criteria:

- » **High school coursework/curriculum**
- » **Cumulative grade point average**
- » **Official ACT or SAT results**
- » **Class rank**

The University also considers the diversity of the student body and applicants' special abilities, talents and achievements in making admission decisions. Diversity may include socioeconomic factors, underrepresented minorities, artistic and/or athletic ability and other special characteristics of the population.

## Applying for admission to BGSU

Applicants: To complete the Bowling Green State University admissions process you must submit:

- » **Application for Undergraduate Admission**
- » **Official high school transcript**
- » **Official ACT or SAT test results**
- » **\$45 application fee**

### Freshmen

Freshmen are defined as those who have graduated from a secondary school. Candidates who earned college credit before high school graduation are considered freshmen with advanced standing and should have their college transcripts sent to the Office of Admissions.

### High school graduates

If you have already graduated from high school, send the documents required directly to the BGSU Office of Admissions. An official high school transcript is also required. If you graduated from high school more than three years ago, you do not need to submit ACT or SAT test scores.

### High school equivalency

If you earned high school equivalency through the General Educational Development (GED) testing program, send directly to the BGSU Office of Admissions. You should then have both an official copy of the GED results and an official high school transcript sent to the Office of Admissions.

### Five-year admission policy

If you have not taken coursework anywhere (high school or college) during the past five years, you are eligible for admission to the University. Students admitted under this five-year admission policy are required to take courses under the close supervision of a college academic advisor.

### Special admissions categories

International students should contact the International Programs Office at BGSU, 419-372-2247, for information on requirements and application procedures. Please note the application fee for international students is \$75.



## Office of Admissions hours

Monday through Friday, 8 a.m. to 5 p.m.

» Presentation (schedule in advance at [www.bgsu.edu](http://www.bgsu.edu)), 10 a.m. and 1 p.m.

» Tours (schedule in advance at: [www.bgsu.edu](http://www.bgsu.edu)), 11 a.m. and 2 p.m.

Select Saturdays during the academic year, 9 a.m. to noon

» Presentation (10 a.m.), Tour (11 a.m.)

**The Office of Admissions will be CLOSED on the following dates in 2012-13:**

September 1-3, 2012	Labor Day
November 12, 2012	Veterans Day
November 22-25, 2012	Thanksgiving
December 15, 2012	Commencement Day
December 24-25, 2012	Christmas
January 1, 2013	New Year's
January 21, 2013	Martin L. King Jr. Day
March 30-31, 2013	Easter
May 4, 2013	Commencement Day
May 27, 2013	Memorial Day
July 4, 2013	Independence Day

## Scheduling your visit

To ensure that BGSU students and faculty will be available, we recommend not scheduling your visit during these dates in the 2012-13 academic year:

Move-in Day for First-Year Students	August 17, 2012
Fall Break	October 4-5, 2012
Thanksgiving Break	November 21, 2012
Fall Exam Week	December 10-14, 2012
Winter Break	December 17, 2012-Jan. 6, 2013
Spring Break	March 4-8, 2013
Spring Exam Week	April 29-May 3, 2013

If you need special accommodations because of a disability, contact the Office of Admissions prior to your visit.

The security of all members of the campus community is a vital concern at Bowling Green State University. Information about crime prevention, the law enforcement authority of the University police, policies for reporting crime on campus, and crime statistics for the most recent three-year period may be requested from the Office of Admissions, Bowling Green State University, Bowling Green, Ohio 43403-0085, 419-372-BGSU; email: [choosebgsu@bgsu.edu](mailto:choosebgsu@bgsu.edu).

## Directions

### From the east or west via Ohio Turnpike

Use Exit 64 (Perrysburg). Follow I-75 South to Exit 181.

### From the north or south via Interstate 75. Use Exit 181.

**From the east or west via U.S. Route 6** Stay on U.S. 6. At the I-75 Interchange, follow I-75 North to the next exit (Exit 181).

The Toledo Express Airport is about a 45-minute drive from campus.

## Overnight accommodations

Best Western Falcon Plaza Motel, 419-352-4671

Hampton Inn, 419-353-3464

Holiday Inn Express, 419-353-5500

(Additional accommodations in Perrysburg and Findlay)

## The City of Bowling Green

You are invited to enjoy the many coffee houses, restaurants and specialty stores, all within walking distance of campus. For more information about Bowling Green, check the Website: [www.visitbgo.org](http://www.visitbgo.org).

## Important phone numbers

**Admissions Information 419-372-BGSU (2478) or toll free 1-866-CHOOSE BGSU (246-6732)**

### College Offices

Arts and Sciences	419-372-2015
BGSU Firelands	419-433-5560
Business Administration	419-372-2747
Education and Human Development	419-372-7372
Health and Human Services	419-372-8242
Musical Arts	419-372-2181
Technology	419-372-7581
Academic Enhancement/Pre-Major Advising (Undecided Majors)	419-372-8943
Athletics	419-372-2401
Disability Services	419-372-8495
Employment, Student	419-372-2865
Fee Payments	419-372-2815
Financial Aid	419-372-2651
Honors Program	419-372-8504
Housing	419-372-2011
International Student Information	419-372-2247
Multicultural Affairs	419-372-2642
Non-Traditional and Transfer Student Services	419-372-8136
Orientation & Registration	419-372-0353
Technology Support Center	
(For information about BGemail/MyBGSU accounts) 419-372-0999	



Download Aurasma Lite. Subscribe to the BGSU Channel and point your device at the map.

## FOR MORE INFORMATION:

Office of Admissions | 110 McFall Center

Bowling Green State University

Bowling Green, Ohio 43403-0085

419-372-BGSU | Toll free: 1-866-CHOOSE BGSU (246-6732)

Fax: 419-372-6955

email: [choosebgsu@bgsu.edu](mailto:choosebgsu@bgsu.edu) | Web site: [www.bgsu.edu](http://www.bgsu.edu)



ACCOMPLISH greatness



Victoria Recker | Music Education

Rickey Logan Jr. | Biology

Clare Strange | Social Work



Bowling Green State University

Bowling Green, Ohio 43403-0085

www.bgsu.edu | 419-372-BGSU (2478)

1-866-CHOOSE BGSU (246-6732)



Bowling Green State University is committed to equal opportunity for all and does not discriminate in admission or access to, or treatment or employment in, its programs and activities on the basis of race, sex, sexual orientation, color, national origin, religion, creed, age, marital status, mental or physical disability or veteran status. The Office of Equity, Diversity and Immigration Services, BGSU, is responsible for University compliance with all relevant statutes, including Title IX, Section 504. Disability Services, 413 South Hall, is responsible for compliance with the Americans with Disabilities Act.